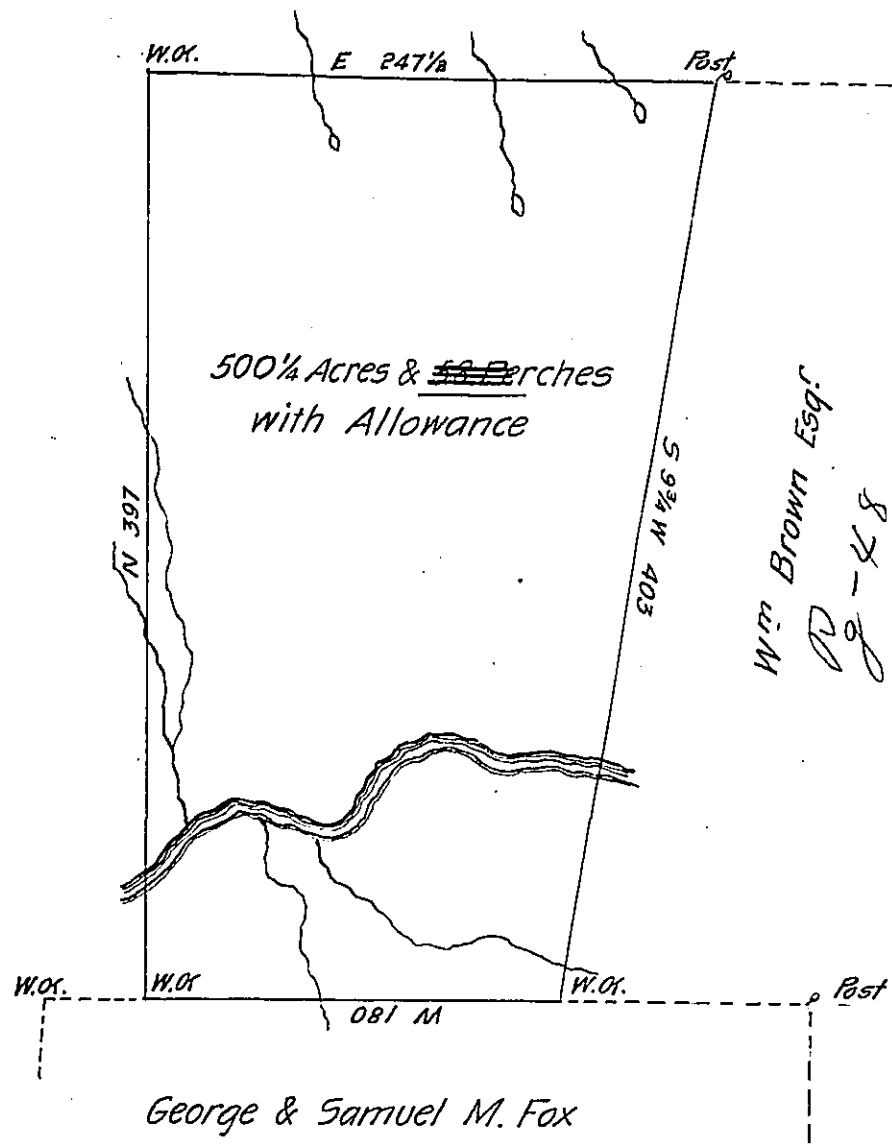


C171-31
Edw Pierce



Surveyd to William Brown Esq the 6th day of July 1785 the above described Tract of Land Containing Five Hundred Acres & Fifty eight Perches with the Allowance of Six P. Cent &c. Situate and lying on both sides of Lick Creek a branch of Tobys Creek adjoining Lands of Edward Pierce George & Samuel M. Fox and others in Northumberland County by Warrant of the 17th of May 1785 Number 207

John Buchanan, D.S.

John Lukens Esq Sur^y Gen^l

IN TESTIMONY that the above is a copy of the original remaining on file in the Department of Internal Affairs of Pennsylvania, made conformably to an Act of Assembly approved the 16th day of February, 1833, I have hereunto set my Hand and caused the Seal of said Department to be affixed at Harrisburg, this eight..... day of February..... 1904.

Samuel B. Brown
Secretary of Internal Affairs.